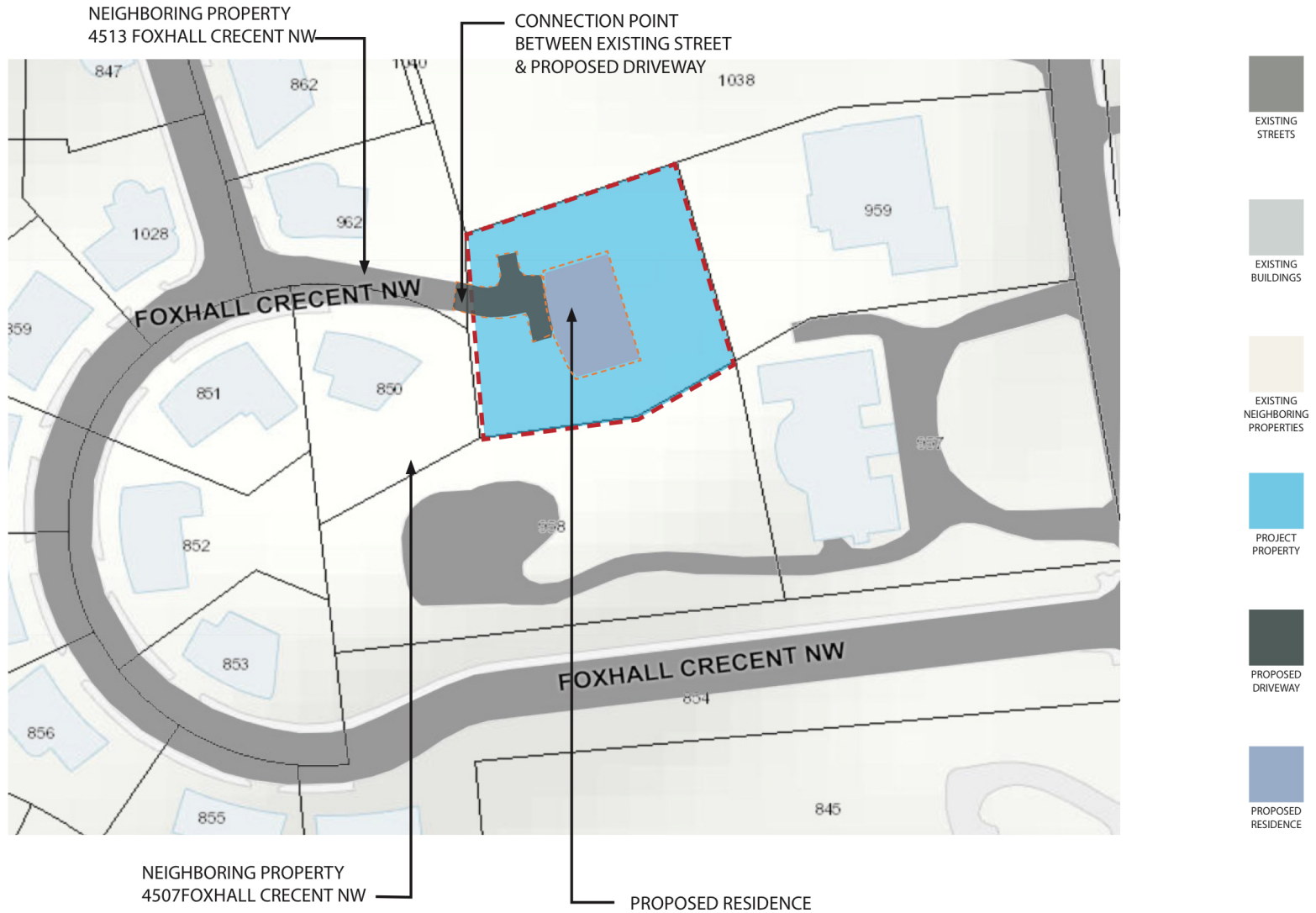
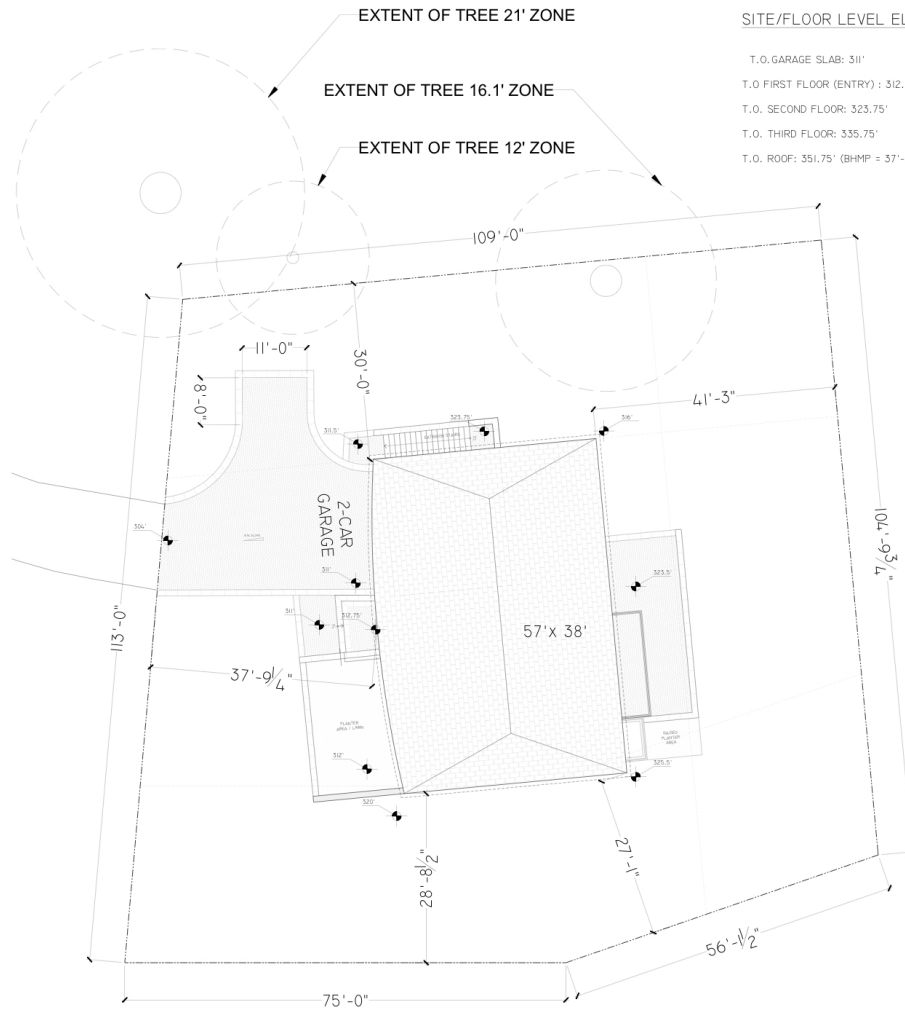


Tree No.	Species	Size / (Crown/area)	CRZ	Condition	Canopy Position	Crown Density	Average Crown Radius	Status	Activities	Existing Conditions / Observations
24*	Quercus alba, White Oak	26.00 (81.68)	39	0.57	Dominant	0.60	20	PRESERVE		NO APPARENT BIOTIC ISSUES OBSERVED. GOOD COLOR, VIGOR, VITALITY. EI AT ROOT CROWN, AND LOWER TRUNK STEM. TREE IS OFF-SITE.
26*	Liriodendron tulipifera, Yellow Poplar	42.00 (131.95)	63	0.60	Dominant	0.30	19	PRESERVE		NO SEVERE BIOTIC ISSUES OBSERVED. GOOD COLOR, VIGOR, VITALITY & STRUCTURE. TREE IS OFF-SITE.
28*	Fagus grandifolia, American Beech	24.9 (78.23)	38	0.65	Dominant	0.80	25	PRESERVE		NO APPARENT BIOTIC ISSUES OBSERVED. GOOD VIGOR, VITALITY & STRUCTURE. SLIGHT DEADWOOD. TREE IS OFF-SITE.
29*	Fagus grandifolia, American Beech	19.9 (62.58)	30	0.65	Dominant	0.80	25	PRESERVE		NO APPARENT BIOTIC ISSUES OBSERVED. GOOD VIGOR, VITALITY & STRUCTURE. TREE IS OFF-SITE.
30*	Ulmus americana, American Elm	14 (43.98)	21	0.40	Dominant	0.45	18	PRESERVE		TREE-30 W/ SIGNIFICANT DEADWOOD IN CANOPY. OPEN CANKER AT ROOT CROWN. TREE SHOWS DECLINE. TREE IS OFF-SITE.
1627	Carya glabra, Pignut Hickory	14.1 (44.30)	22	0.25	Dominant	0.15	14	REMOVE		TREE-1627 W/ SEVERE INVASIVE ENGLISH IVY (EI) FROM GRADE TO CANOPY. EI EMBEDDED INTO TRUNK STEM. POOR SCAFFOLD BRANCHING.
1628	Quercus rubra, Northern Red Oak	9.3 (29.22)	14	0.25	Dominant	0.15	8	REMOVE		NO SEVERE BIOTIC ISSUES OBSERVED. TREE-1628 W/ SEVERE INVASIVE ENGLISH IVY (EI) FROM GRADE TO CANOPY. VERY LOW CANOPY RATIO. POOR SCAFFOLD BRANCHING.
1629	Prunus serotina, Black Cherry	13.1 (41.15)	20	0.00-0.05	Codominant	0.10	8	REMOVE		TREE-1629 W/ SEVERE INVASIVE EI & WILD GRAPE (VITIS) FROM GRADE TO CANOPY. EXPOSED ROOTS AT CANOPY.
1630	Robinia pseudoacacia, Black Locust	7.6 (23.88)	12	0.10	Codominant	0.10	14	REMOVE		TREE-1630 IN SEVERE DECLINE. SEVERE INVASIVE ENGLISH IVY (EI) & POISON IVY FROM GRADE TO CANOPY.
1631	Quercus alba, White Oak	7.5 (23.56)	12	0.00-0.05	Codominant	0.05	6	REMOVE		TREE-1631 IN SEVERE DECLINE. INVASIVE VINE FROM GRADE TO CANOPY. VERY (V) POOR STRUCTURE & SCAFFOLD BRANCHING.
1634	Fagus grandifolia, American Beech	17.3 (54.34)	26	0.65	Dominant	0.45	18	PRESERVE		NO APPARENT BIOTIC ISSUES OBSERVED. GOOD VIGOR, VITALITY & STRUCTURE.
1635	Fagus grandifolia, American Beech	11.5 (36.13)	18	0.65	Dominant	0.70	10	PRESERVE		NO APPARENT BIOTIC ISSUES OBSERVED. GOOD VIGOR, VITALITY & STRUCTURE.
1636	Fagus grandifolia, American Beech	18.0 (56.55)	27	0.65	Dominant	0.85	18	PRESERVE		NO APPARENT BIOTIC ISSUES OBSERVED. GOOD VIGOR, VITALITY & STRUCTURE.
1637	Quercus alba, White Oak	12.8 (40.21)	20	0.00	Codominant	0.08	7	REMOVE		TREE-1637 W/ SEVERE EI FROM GRADE TO CANOPY. TREE IN SEVERE DECLINE. SHOWS NO SCAFFOLD BRANCHING.
1638	Robinia pseudoacacia, Black Locust	7.6 (23.88)	12	0.00-0.05	Codominant	0.15	10	REMOVE		TREE-1638 W/ VERY SEVERE EI FROM GRADE TO CANOPY. VERY POOR SCAFFOLD BRANCHING & CANOPY RATIO. V POOR STRUCTURE.
1639	Fagus grandifolia, American Beech	10.6 (33.30)	16	0.60	Codominant	0.90	12	PRESERVE		NO APPARENT BIOTIC ISSUES OBSERVED. GOOD VIGOR & VITALITY. FAIR/GOOD STRUCTURE.
1640	Quercus prinus, Chestnut Oak	21 (65.97)	32	0.60	Dominant	0.80	18	PRESERVE		NO APPARENT BIOTIC ISSUES OBSERVED. GOOD VIGOR, VITALITY & STRUCTURE. SLIGHT DEADWOOD.
1641	Fagus grandifolia, American Beech	5.2 (16.33)	8	0.50	Codominant	0.70	8	PRESERVE		NO SEVERE BIOTIC ISSUES OBSERVED. GOOD VIGOR & VITALITY. SEVERE INVASIVE ENGLISH IVY FROM GRADE TO CANOPY.
5368	Quercus alba, White Oak	27.00 (84.82)	41	0.00 - 0.05	Dominant	0 - 0.05	15	REMOVE		TREE-5368 IS IN SEVERE DECLINE. EMBEDDED EI FROM GRADE TO CANOPY. NEAR NECROSIS.
5369	Carya glabra, Pignut Hickory	20.30 (63.77)	30	0.15	Codominant	0.10	12	REMOVE		VERY SEVERE INVASIVE ENGLISH IVY FROM GRADE TO CANOPY. EI EMBEDDED INTO TRUNK STEM.
5374	Quercus alba, White Oak	32.40 (101.78)	49	0.58	Dominant	0.25	18	PRESERVE		NO SEVERE BIOTIC ISSUES OBSERVED. GOOD COLOR, VIGOR & VITALITY. LOW CANOPY RATIO. INVASIVE VITIS (GRAPE VINE).

*DBH = Diameter at Breast Height (measured 4.5 feet above ground).
 CRZ = Critical Root Zone (1.5 feet of radius per inch of tree diameter). CRZ for trees with multiple stems is calculated based on the diameter of a tree with the basal area equal to the sum of the basal areas for all stems measured.
 * = Indicates that the subject tree is off-site and that caliper is estimated. Because the tree is off-site the immediate close-up biotic conditions were not observed.
 Condition Ratings are provided as percentages and are based on methods outlined in the "Guide for Plant Appraisal" by the International Society of Arboriculture (ISA).
 C:\Projects\4509 Foxhall Crescent NW\4509 Foxhall Crescent.dwg (2022-04-03 10:44:00 AM) (Scale: 1/8"=1'-0")





SITE/FLOOR LEVEL ELEVATIONS:

- T.O. GARAGE SLAB: 311'
- T.O. FIRST FLOOR (ENTRY): 312.75'
- T.O. SECOND FLOOR: 323.75'
- T.O. THIRD FLOOR: 335.75'
- T.O. ROOF: 351.75' (BHMP = 37'-0")

PROPOSED PROJECT METRICS:

- LOT AREA: 13,629 sqft
- PROP. LOT OCCUPANCY: 18.5%
- MAX BUILDING HEIGHT: 37 ft
- REAR YARD SETBACK: 41'-3"ft
- SIDE YARD SETBACK: 30 ft
- RESIDENTIAL FAR: n/a
- NON-RESIDENTIAL FAR: n/a
- BRL: n/a
- STORY LIMIT: 3 STORIES
- GROSS SF: 6,500SF.

proposed architectural site plan

2
1

